

COLOR CONFORMANCE CONFERENCE '25

New Port Richey, FL (Tampa North)
January 28–30, 2025



**COLOR CONFORMANCE
CONFERENCE '25**

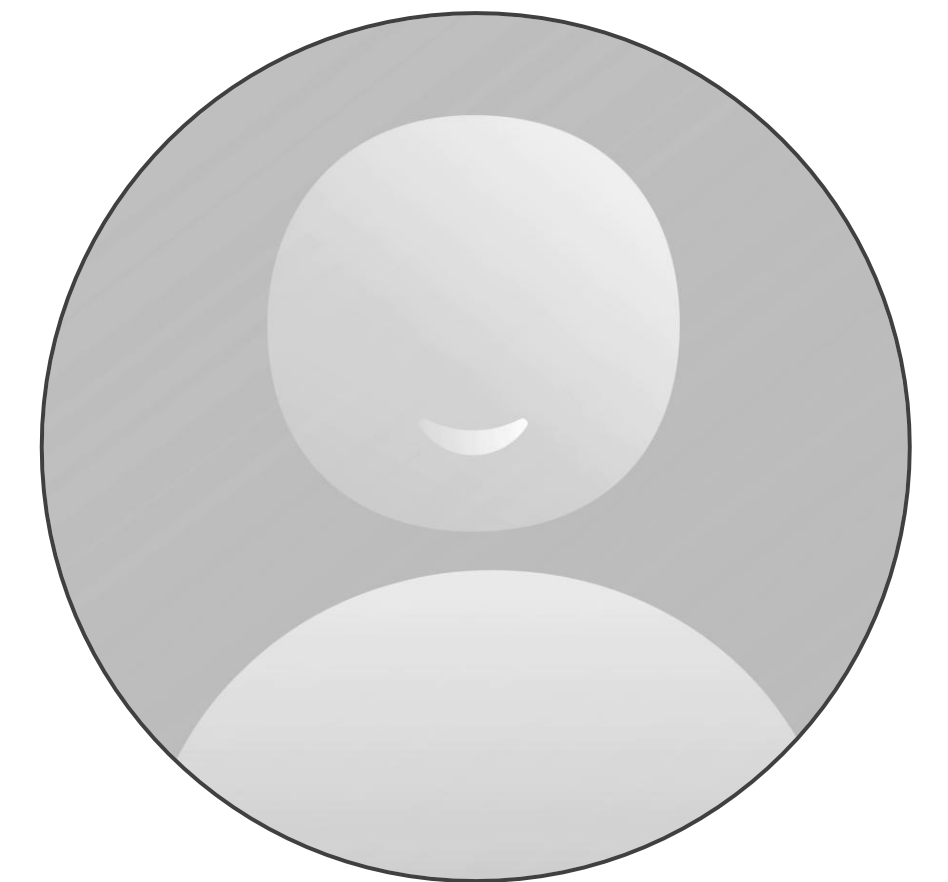
Color Communication

January 28, 2025

Presented by
Larry Jones

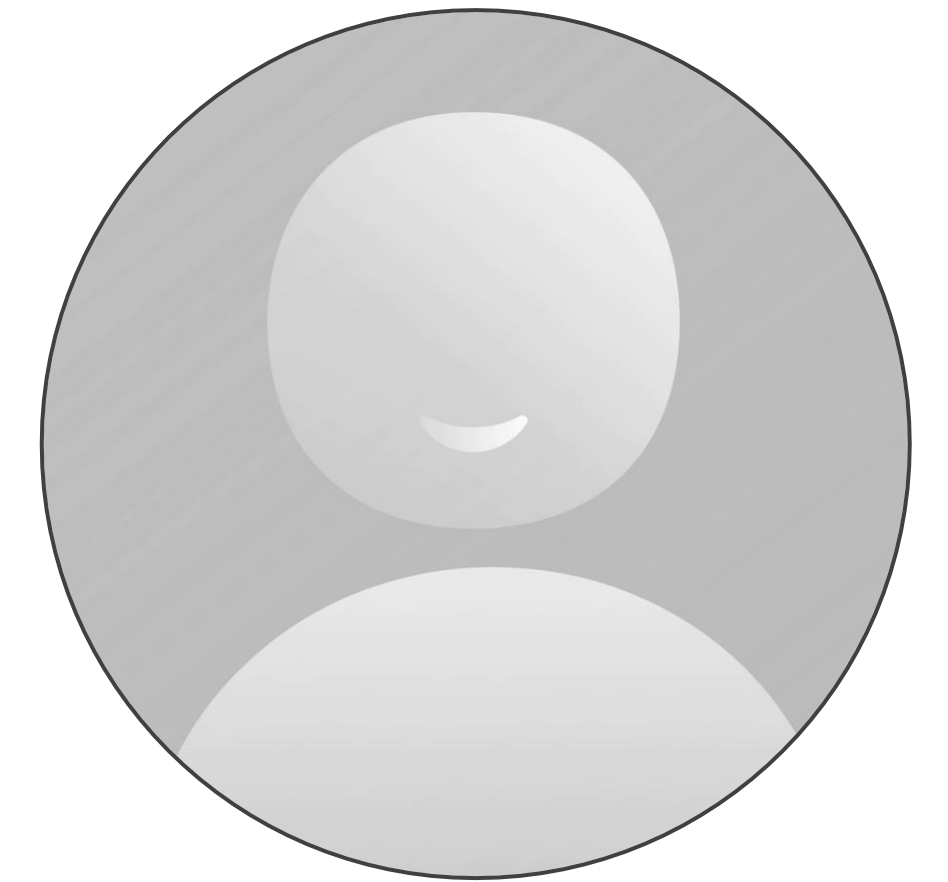
Agenda

- Importance of Color Communication
- Implement your roadmap for success
 - Experiences in the field
 - Print condition definition – track templates
 - Color definitions
 - Substrates



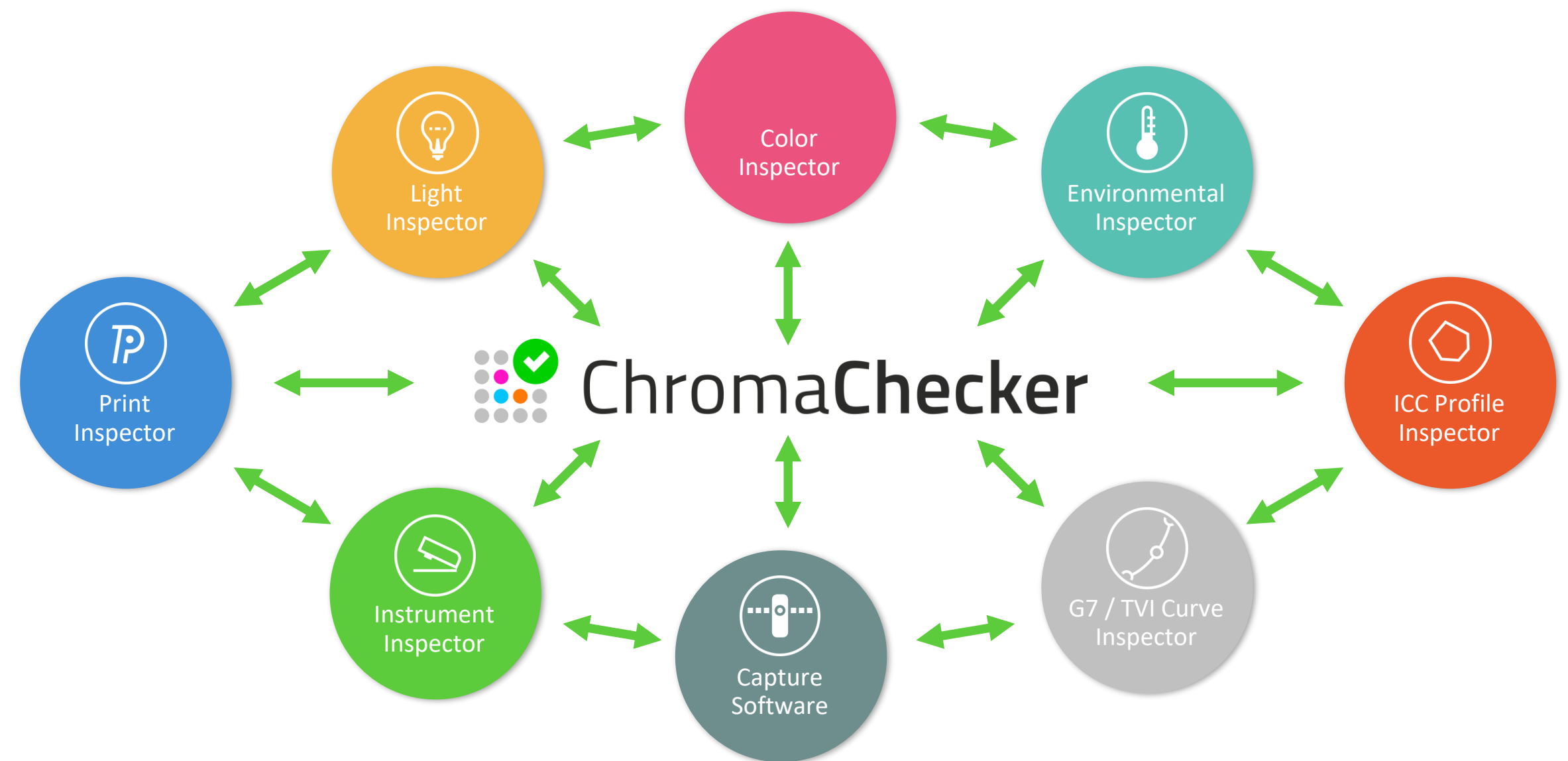
Color Communication

- Foundational Principles for Color Communication
 - Clarity
 - Conciseness
 - Consistency
 - Audience
 - Feedback or two-way communication



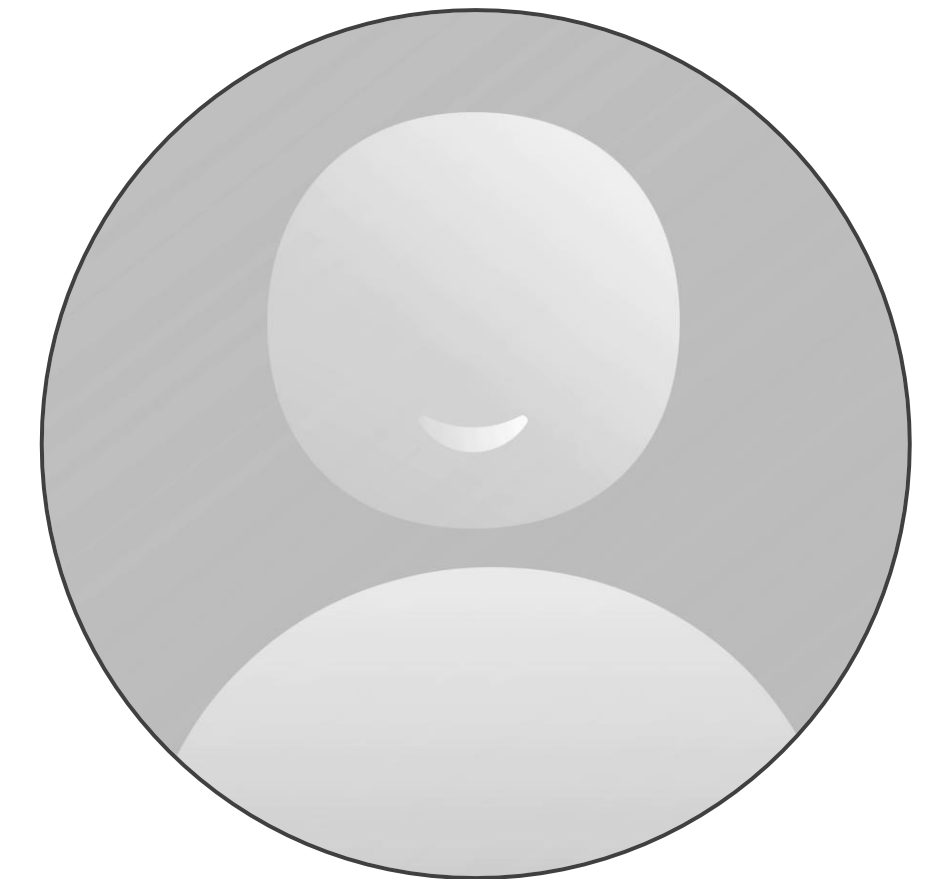
Color Conformance Platform

- Communicate color effectively with designers
- From display to print
- Maintaining color across the production workflow
- Cost cost of color errors
 - Printed waste
 - Rework



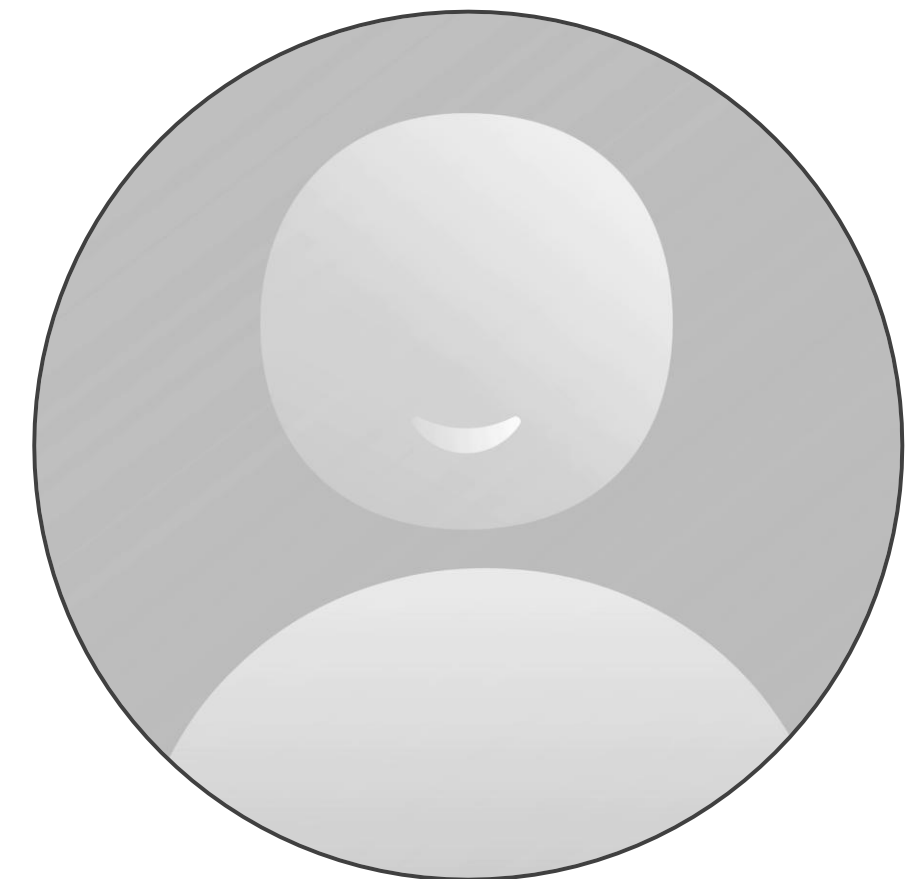
Quality Control Basics

- Device precision and accuracy must both exist
 - efficiency and effectiveness
 - productivity and profitability
- E-Factor is used to quantify color quality
 - device precision and accuracy
 - color “match” expectations
 - what is waste and what is salable
- 5 C’s of Color Control
 - used to define process discipline
 - steps to meet color quality expectation



Project Inspector

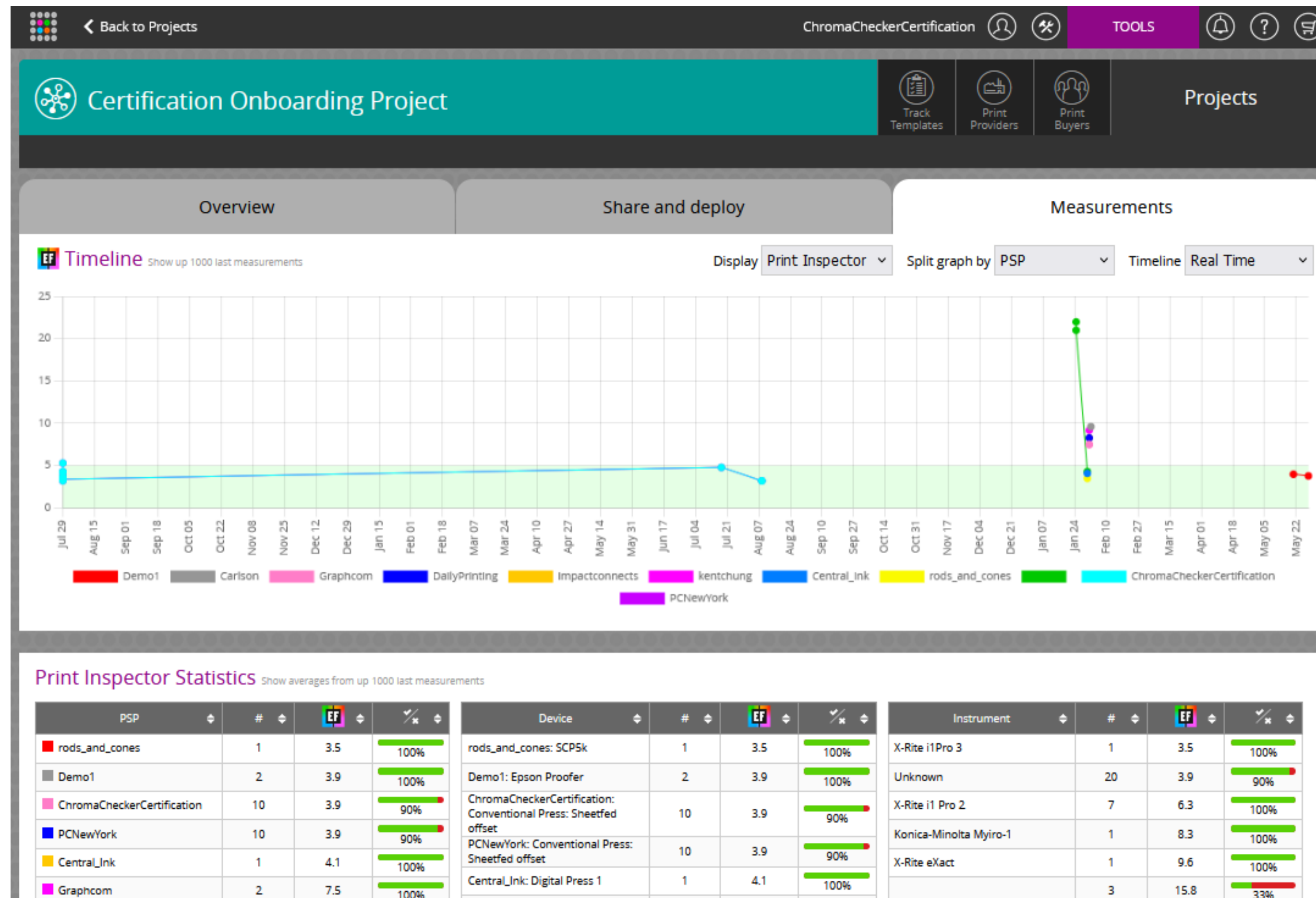
- Roadmap components
 - Track templates – one-to-many print devices
 - Asset Library – color definitions
 - Process control and Spot color matching
- Clearly communicate through entire chain
 - Color definitions
 - Specifications
 - Tolerances
- Quality control program
 - Reporting at all levels
 - Best practices enforced
 - SOPs for operators



Welcome Dashboard

The screenshot displays the ChromaChecker dashboard. At the top, a navigation bar includes the ChromaChecker logo, a 'Dashboard Scheme' link, and a 'ChromaCheckerCertification' status. A 'TOOLS' menu is visible on the right. The main content area is divided into several sections. On the left, a 'Printing Devices' list shows 'rods_and_cones', 'Promaxsb', 'rpimaging', and 'Grafika'. Below this is a grid of four large colored tiles: 'Print INSPECTOR' (blue, 5 devices | 23 tracks), 'Instrument INSPECTOR' (green, 2 instruments | 2 targets), 'Project INSPECTOR' (teal), and 'Accountability INSPECTOR' (purple, 2 staff members). At the bottom of this grid is a row of smaller tiles for 'Color', 'Performance', 'ICC Profile', 'Substrate', 'Lighting', 'Capture', 'Environmental', and 'G7® Curve'. On the right side, a 'Print Inspector' status bar shows an expiration date of 2026-01-30 and 5/40 devices. Below this is a 'What's New' section with updates from June 6, 2024, to April 8, 2024. Further down are sections for 'Trainings' (ChromaChecker Champion Course), 'Webinars' (What's New in ChromaChecker Session), and 'Case Studies' (Spotlight on Spots). A footer at the bottom right encourages users to 'Try our mobile apps - App Store'.

Measurement Tracking



Roadmap Definition

Back to Projects

ChromaCheckerCertification

TOOLS

Certification Onboarding Project

Track TemplatesPrint ProvidersPrint Buyers

Projects

Add Capture Job

Add Substrate

Add Color Standards

Overview

Share and deploy

Measurements

This project is already assigned to 37 PSP. Please notice, that any change to the project will result in e-mail notification sent to all PSP.

Project

Project Name

Certification Onboarding Project

Created: 2024-01-24 13:00:19

Modified: 2025-01-26 14:07:06

Print Inspector

Track Template

G7 Verification

Reference: ICC Profile

CMYK ICC Profile: GRACoL2013_CRPC6 V2

SCCA: OFF

Control Strip: G7 Verifier

M. Conditions: M1

Tolerance: G7 Gray Production Tolerances 2015

5 (click to visualize)

SAVE

Project description

This project is provided as verification that you have mastered providing measurements meeting a predefined tolerance.


Substrate

Name

Glossy 17x22

Color standards

	Name	Assets	Created	M0	M1	M2	M3	SPIN	SPEX	SPINUV	SPEXUV		
<input type="checkbox"/>	OB2.75	ChromaSpot copy	2022-08-30 04:46										
<input type="checkbox"/>	BBY_GS_Orange	BBY_BrandColors		⊙									
<input type="checkbox"/>	BBY_MagnoliaRed	BBY_BrandColors		⊙									

 COLOR CONFORMANCE
CONFERENCE '25

Project Deployment

Back

ChromaCheckerCertification

TOOLS

Project Inspector

Track Templates

Print Providers

Print Buyers

Projects

Add Track Template +

Edit Track Template

Any changes done to track template will result in automatic update for all tracks and projects that uses this template. It may take couple of minutes to fully implement those changes and all PSP will receive an email notification once it is done.

Last time modified: 2025-01-26 09:01:21

Track Info	Reference	Advanced
<div>Name</div> <div>Certification Onboarding Project</div>	<div>Calculate to:</div> <div>ICC profile</div>	<div>Backing</div> <div>white</div>
<div>Measurement Conditions</div> <div>M0</div>	<div>CMYK / nCLR ICC Profile</div> <div>GRACoL2013_CRPC6 V2</div>	<div>TVI</div> <div>Colorimetric</div>
<div>Description</div> <div></div>	<div>RGB ICC Profile</div> <div>-</div>	<div>G7® Native CMY</div> <div>Off</div>
<div>Tolerance</div>	<div><input checked="" type="checkbox"/> SCCA</div>	<div>Additional Optional Libraries</div>
<div>Tolerance Set</div> <div>E-Factor < 5 Digital</div>	<div>Control Strip</div> <div>Default Control Strip</div> <div>minimal_G7</div>	<div>Color Library or Palette is required only if You want to use Spot colors and You are not able to define Control Strip (that might be a case for some devices).</div>
<div>Desired E-Factor</div> <div>5</div>		<div>Color Palette</div> <div>Snowflake 50 0 0 palette</div>
		<div>Color Library</div> <div>ChromaSpot</div>

SAVE

Project Deployment

- Internal and external assignment
- One-to-many

My Devices

Locations

Departments

Printing Process

Measurement System

Supplemental Instrument

	Device Name	Integrated Measurement System	Supplemental Instrument	CC Capture	CC Uploader	HP Colorbeat	On/Off	
<input type="checkbox"/>	Conventional Press: Sheetfed offset	Techkon SpectroDrive Expresso	Techkon SpectroDens Premium	<div><div></div><div></div><div></div></div>	<div><div></div></div>		<div><div></div></div>	<div><div></div></div>
<input type="checkbox"/>	Digital Press	<div><div></div></div>	X-Rite I1 Pro 2				<div><div></div></div>	<div><div></div></div>
<input type="checkbox"/>	Digital Press 1	<div><div></div></div>	ColorChecker Studio				<div><div></div></div>	<div><div></div></div>
<input type="checkbox"/>	Large Format Printer	<div><div></div></div>	X-Rite I1 Pro 2				<div><div></div></div>	<div><div></div></div>
<input type="checkbox"/>	Proofer	<div><div></div></div>	X-Rite I1 Pro 2				<div><div></div></div>	<div><div></div></div>
<input type="checkbox"/>	Select opposite							