

### CC Digital QC • **DQC-01**

1. Review gray background for streaks or unevenness, if seen, perform maintenance on the printer to eliminate before step #2.
2. If print is set for G7® mode, the 50% gray circles should match; if not, please check workflow configuration to ensure G7® settings.
3. If 1&2 are correct, measure target using CC Capture to assess Color Conformance!

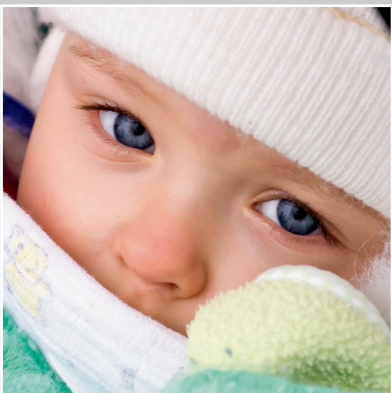
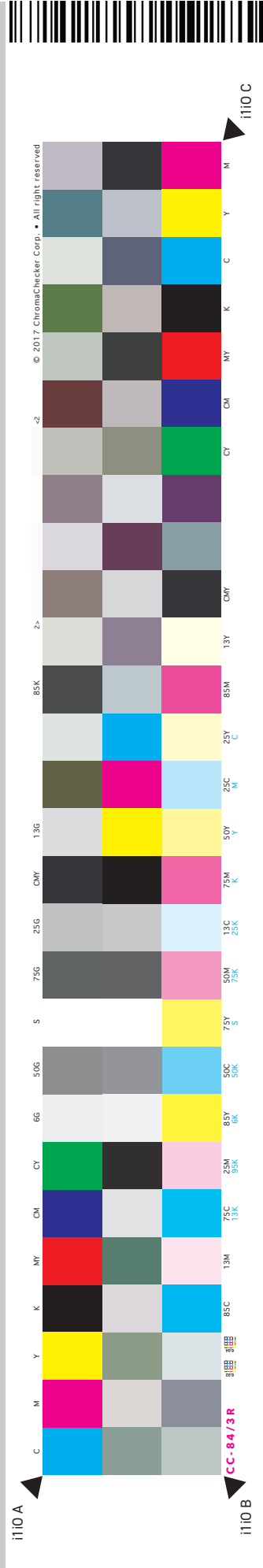
Company Name/ Location: .....

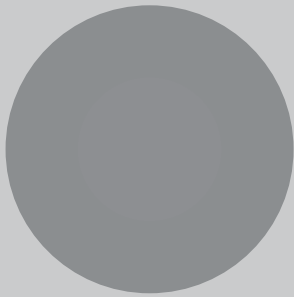
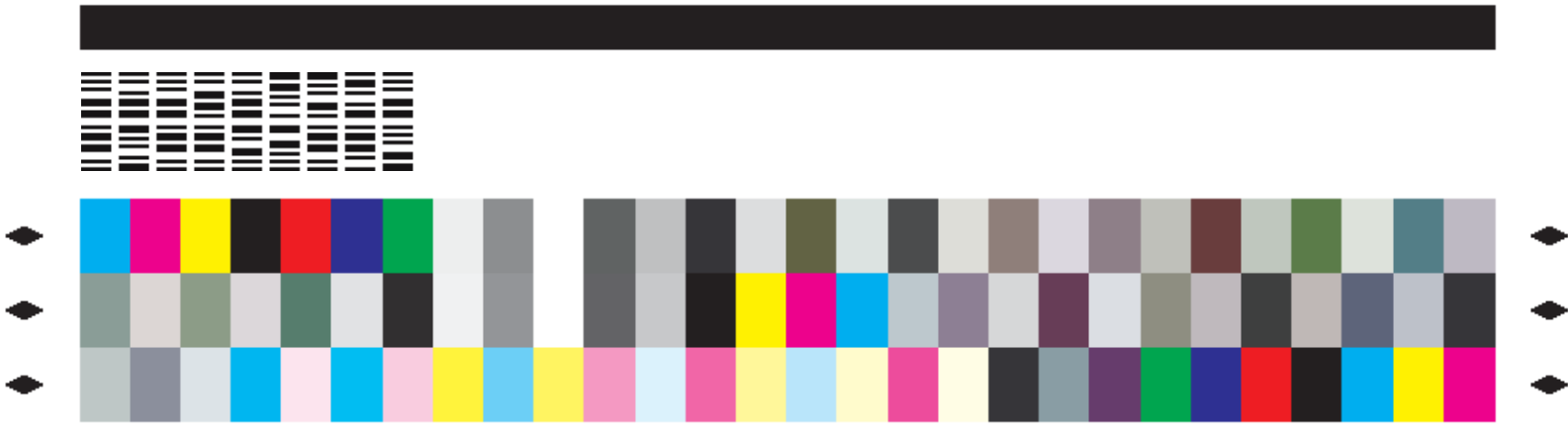
Printing Device / RIP: .....

Substrate: .....



i1, eXact, MYIRO-1





### CC Digital QC • DQC-02

1. Review gray background for streaks or unevenness, if seen, perform maintenance on the printer to eliminate before step #2.
2. If print is set for G7® mode, the 50% gray circles should match; if not, please check workflow configuration to ensure G7® settings.
3. If 1&2 are correct, measure target using CC Capture to assess Color Conformance!

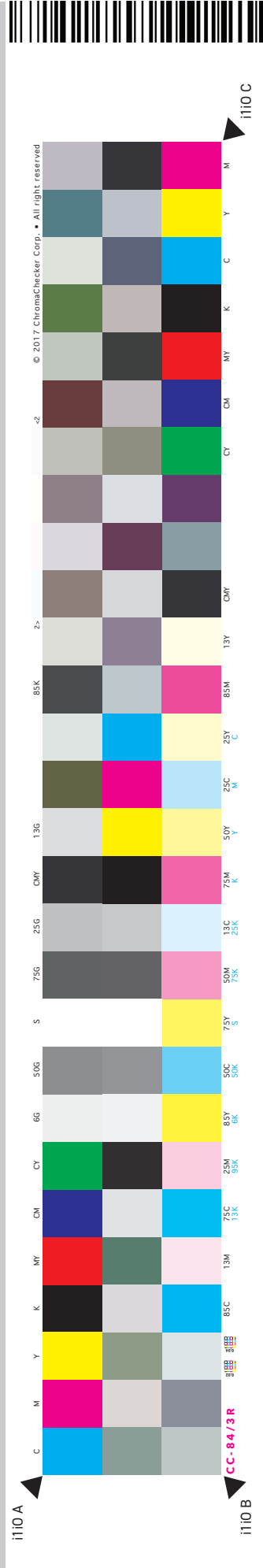
Company Name/ Location: .....

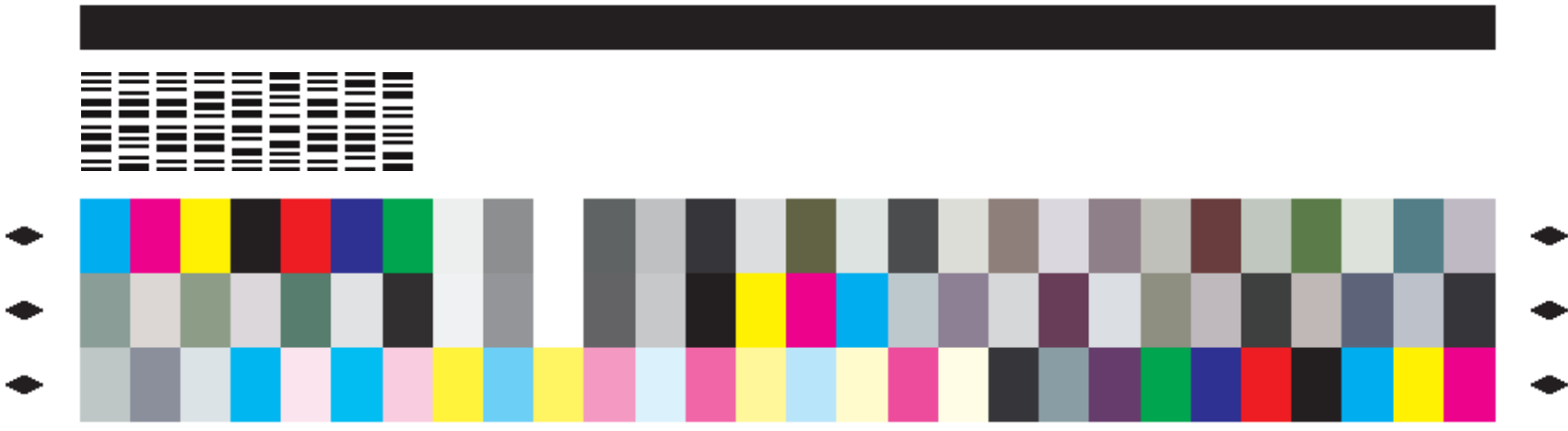
Printing Device / RIP: .....

Substrate: .....



i1, eXact, MYIRO-1





### CC Digital QC • DQC-03

1. Review gray background for streaks or unevenness, if seen, perform maintenance on the printer to eliminate before step #2.
2. If print is set for G7® mode, the 50% gray circles should match; if not, please check workflow configuration to ensure G7® settings.
3. If 1&2 are correct, measure target using CC Capture to assess Color Conformance!

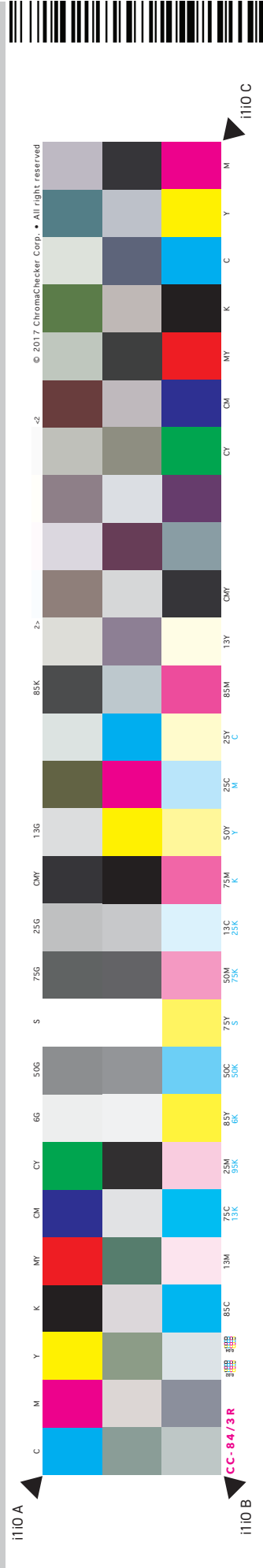
Company Name/ Location: .....

Printing Device / RIP: .....

Substrate: .....

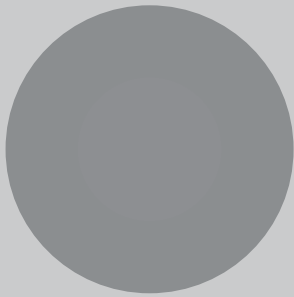
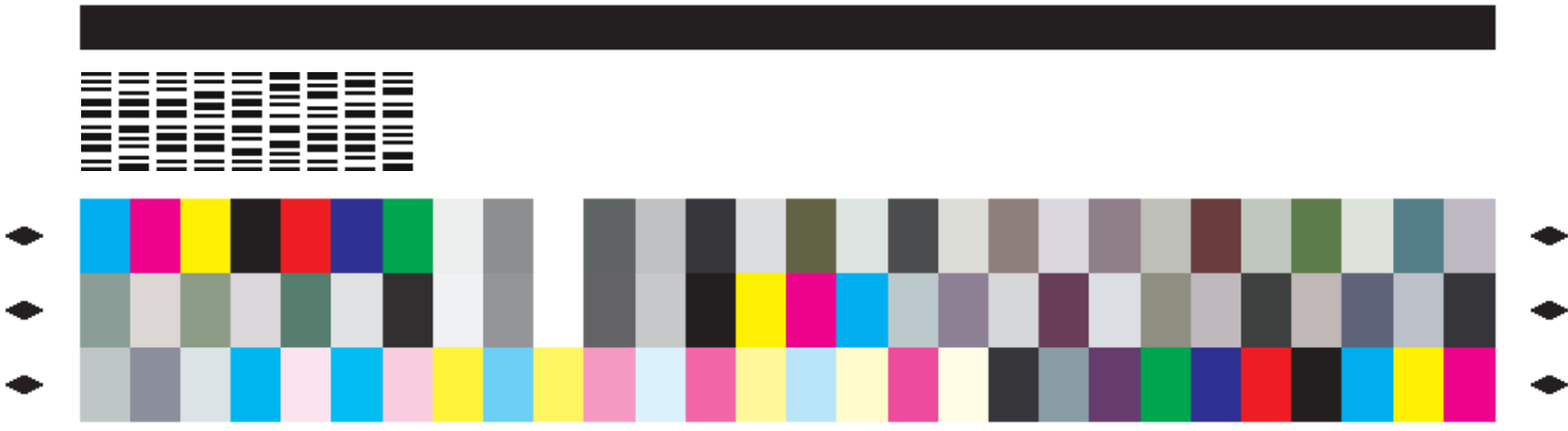


i1, eXact, MYIRO-1



i110 bottom





### CC Digital QC • DQC-04

1. Review gray background for streaks or unevenness, if seen, perform maintenance on the printer to eliminate before step #2.
2. If print is set for G7® mode, the 50% gray circles should match; if not, please check workflow configuration to ensure G7® settings.
3. If 1&2 are correct, measure target using CC Capture to assess Color Conformance!

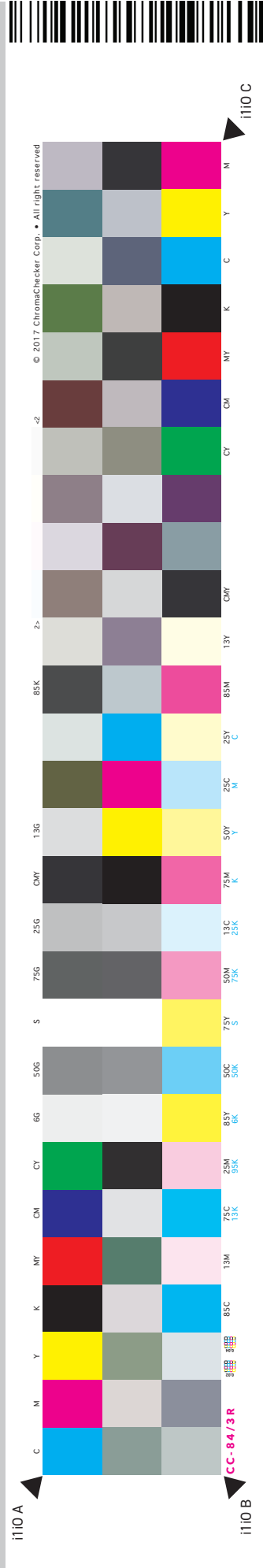
Company Name/ Location: .....

Printing Device / RIP: .....

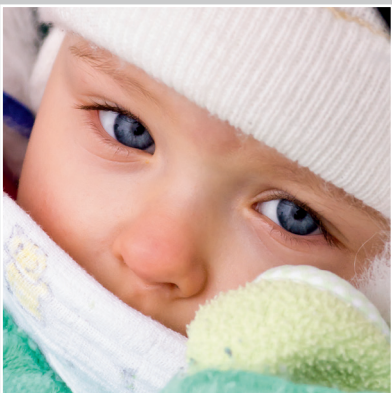
Substrate: .....

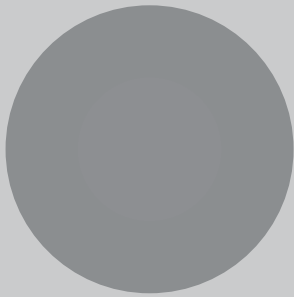
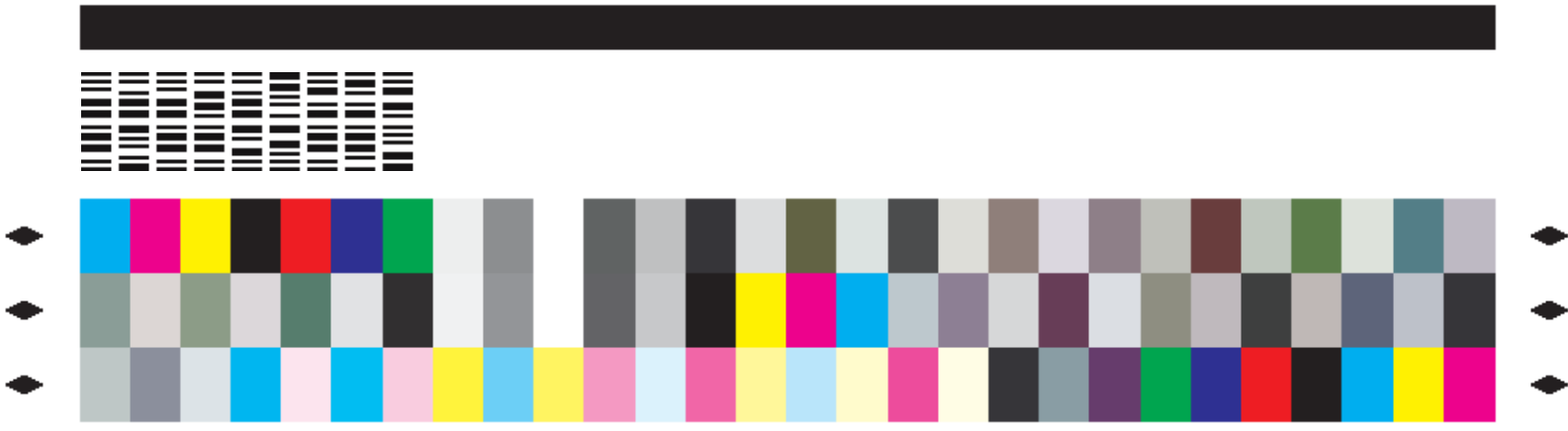


i1, eXact, MYIRO-1



i110 bottom





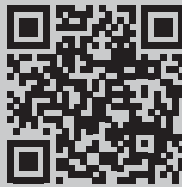
### CC Digital QC • DQC-05

1. Review gray background for streaks or unevenness, if seen, perform maintenance on the printer to eliminate before step #2.
2. If print is set for G7® mode, the 50% gray circles should match; if not, please check workflow configuration to ensure G7® settings.
3. If 1&2 are correct, measure target using CC Capture to assess Color Conformance!

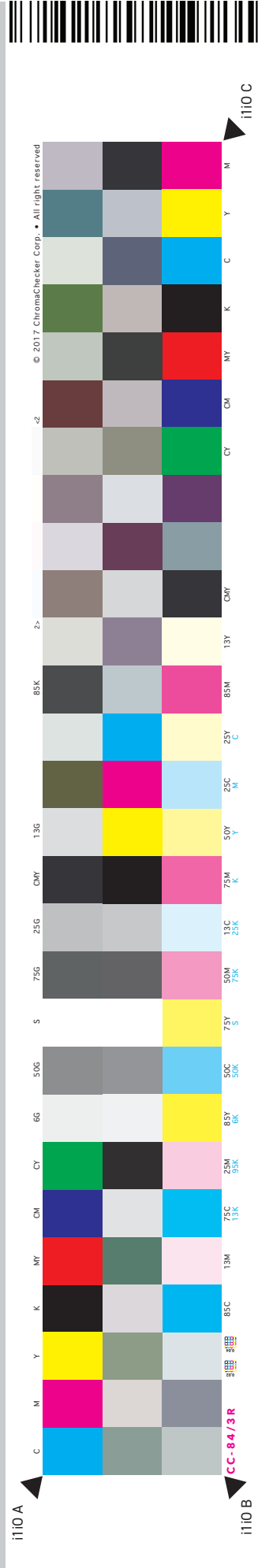
Company Name/ Location: .....

Printing Device / RIP: .....

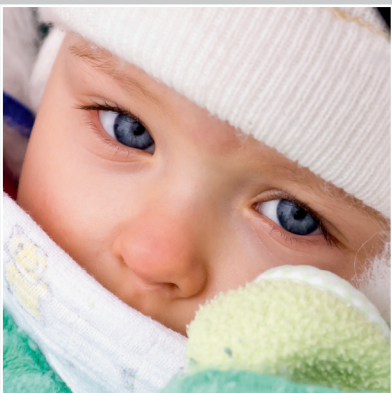
Substrate: .....

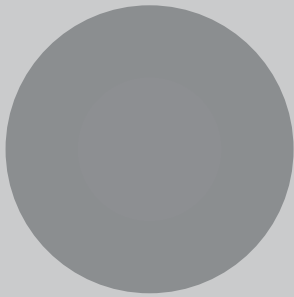
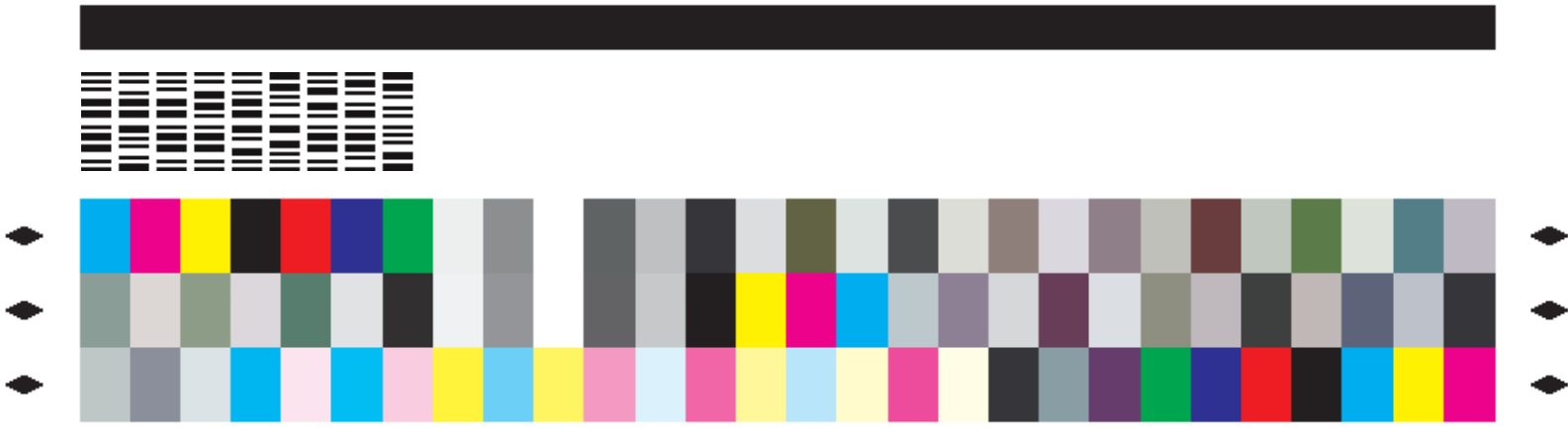


i1, eXact, MYIRO-1



i110 bottom





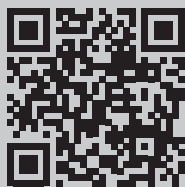
## CC Digital QC • **DQC-06**

1. Review gray background for streaks or unevenness, if seen, perform maintenance on the printer to eliminate before step #2.
2. If print is set for G7® mode, the 50% gray circles should match; if not, please check workflow configuration to ensure G7® settings.
3. If 1&2 are correct, measure target using CC Capture to assess Color Conformance!

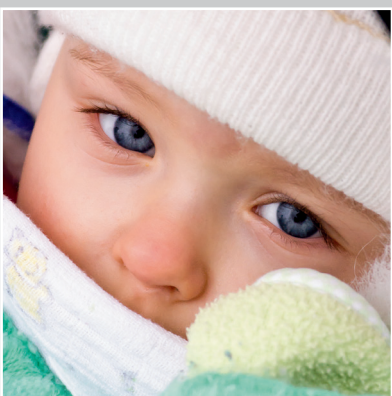
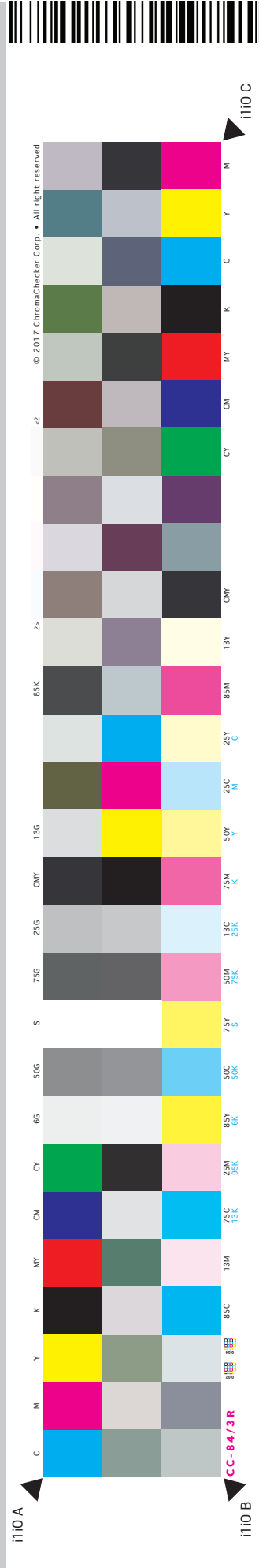
Company Name/ Location: .....

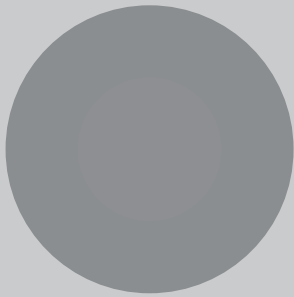
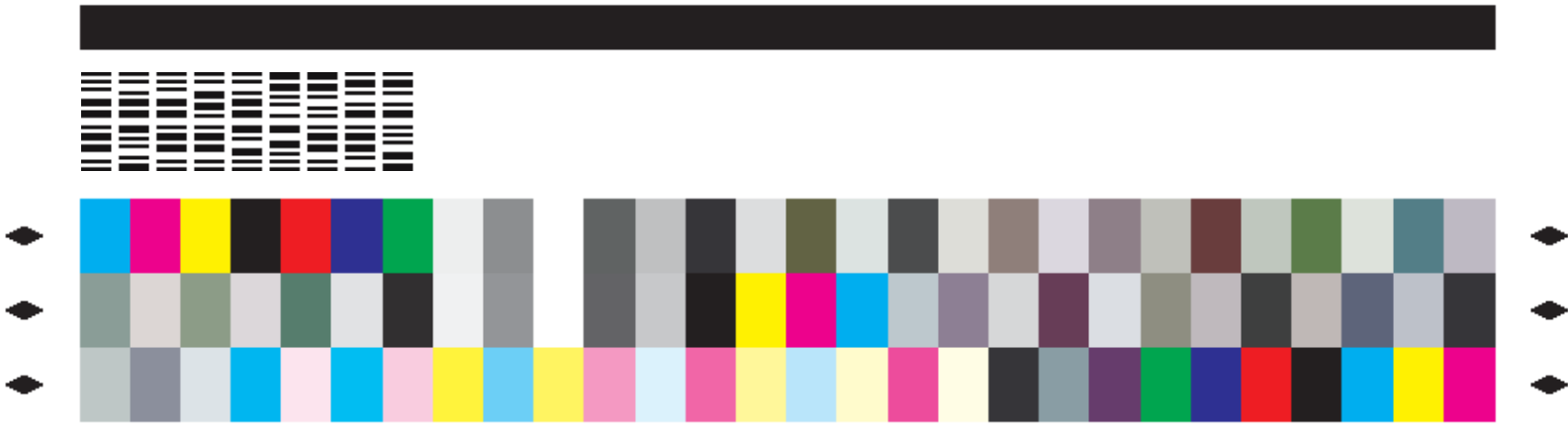
Printing Device / RIP: .....

Substrate: .....



i1, eXact, MYIRO-1





### CC Digital QC • **DQC-07**

1. Review gray background for streaks or unevenness, if seen, perform maintenance on the printer to eliminate before step #2.
2. If print is set for G7® mode, the 50% gray circles should match; if not, please check workflow configuration to ensure G7® settings.
3. If 1&2 are correct, measure target using CC Capture to assess Color Conformance!

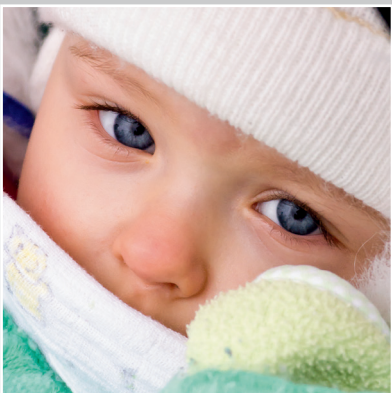
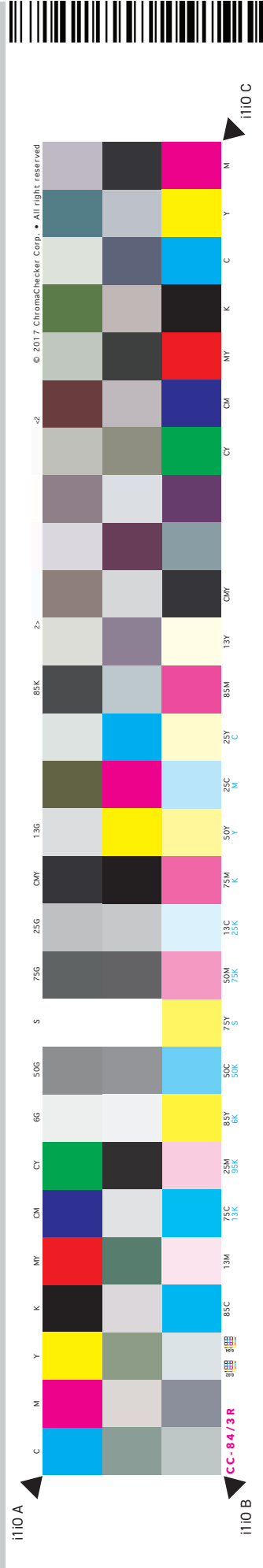
Company Name/ Location: .....

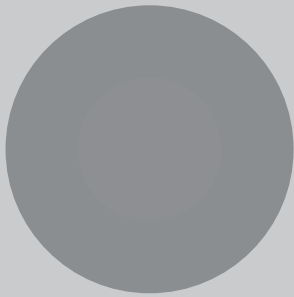
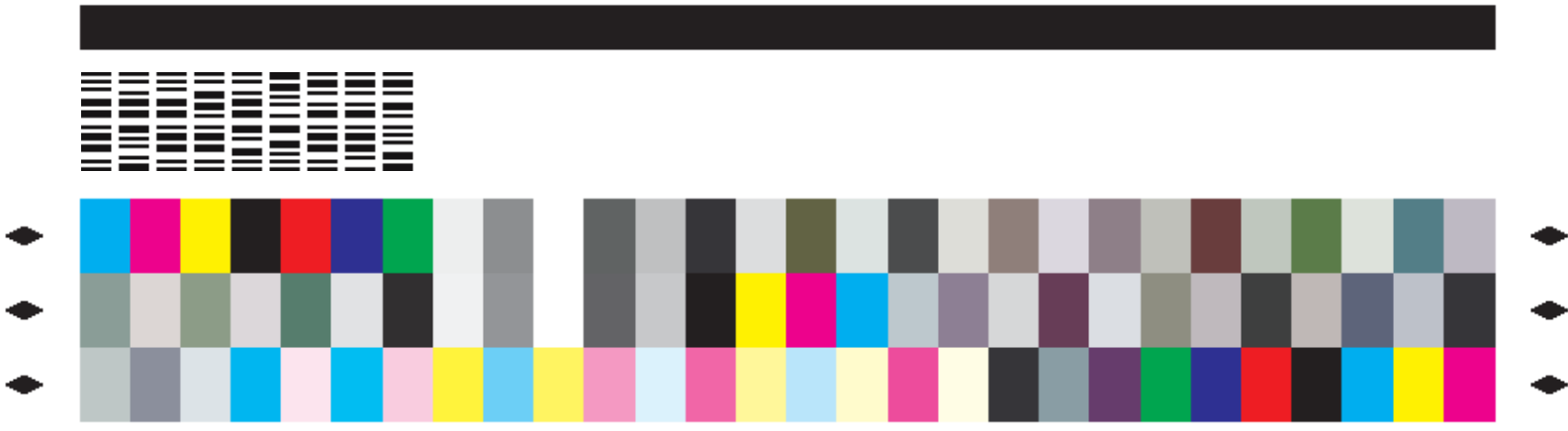
Printing Device / RIP: .....

Substrate: .....



i1, eXact, MYIRO-1





### CC Digital QC • DQC-08

1. Review gray background for streaks or unevenness, if seen, perform maintenance on the printer to eliminate before step #2.
2. If print is set for G7® mode, the 50% gray circles should match; if not, please check workflow configuration to ensure G7® settings.
3. If 1&2 are correct, measure target using CC Capture to assess Color Conformance!

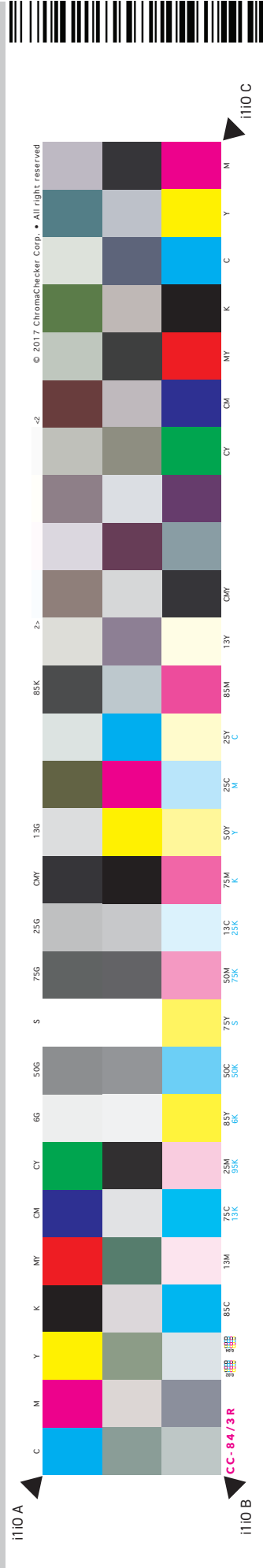
Company Name/ Location: .....

Printing Device / RIP: .....

Substrate: .....



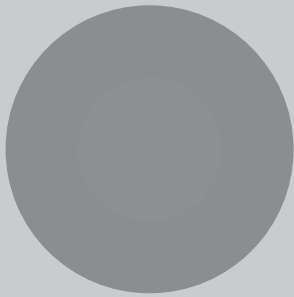
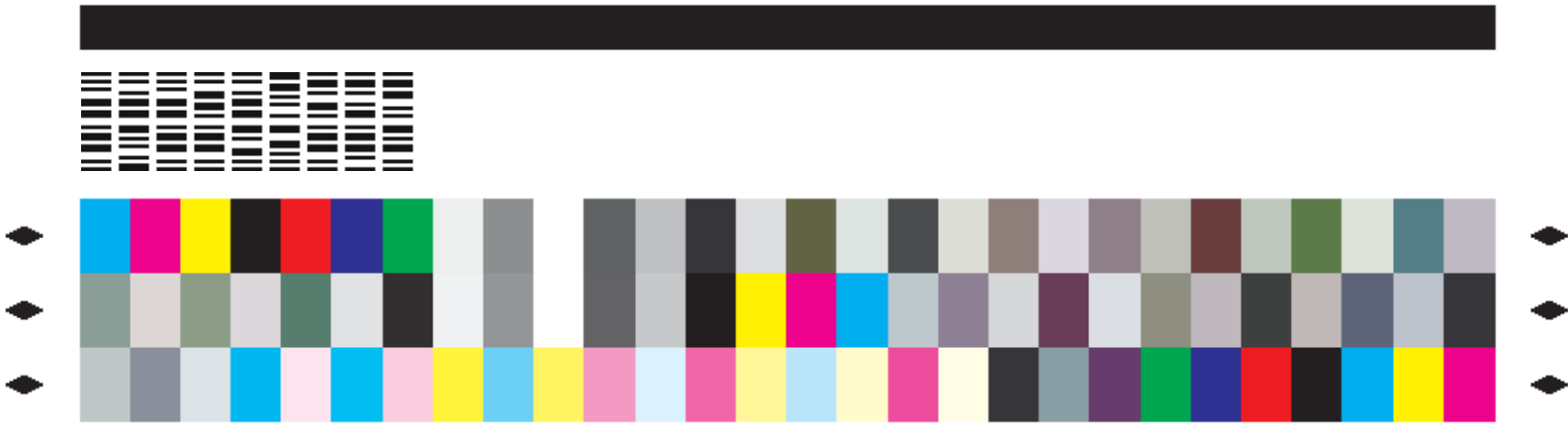
i1, eXact, MYIRO-1



i110 bottom







### CC Digital QC • **DQC-09**

1. Review gray background for streaks or unevenness, if seen, perform maintenance on the printer to eliminate before step #2.
2. If print is set for G7® mode, the 50% gray circles should match; if not, please check workflow configuration to ensure G7® settings.
3. If 1&2 are correct, measure target using CC Capture to assess Color Conformance!

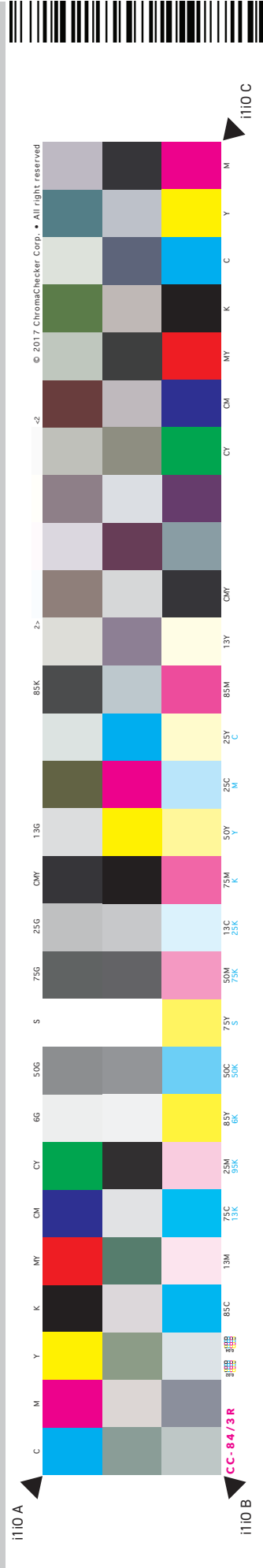
Company Name/ Location: .....

Printing Device / RIP: .....

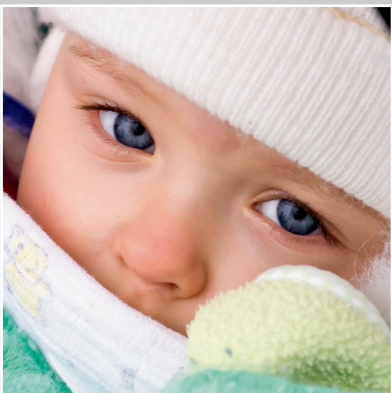
Substrate: .....

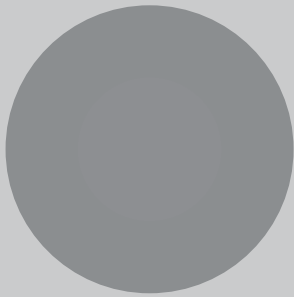
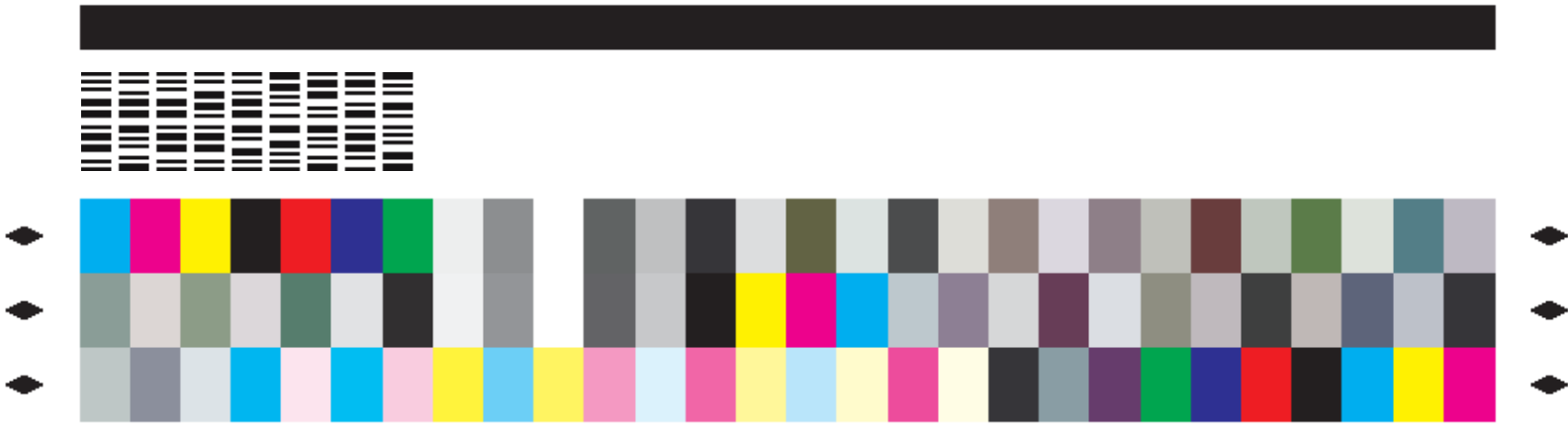


i1, eXact, MYIRO-1



i110 bottom





## CC Digital QC • DQC-10

1. Review gray background for streaks or unevenness, if seen, perform maintenance on the printer to eliminate before step #2.
2. If print is set for G7® mode, the 50% gray circles should match; if not, please check workflow configuration to ensure G7® settings.
3. If 1&2 are correct, measure target using CC Capture to assess Color Conformance!

Company Name/ Location: .....

Printing Device / RIP: .....

Substrate: .....



i1, eXact, MYIRO-1

